

Customer: _____	Catalog No.	Quantity	GPM	Feet	Volt	Phase	Encl.
Engineer: _____							
Submitter: _____ Date: _____							
Approval: _____ Date: _____							
Order No.: _____ Date: _____							

**Base Model: 3SV – 1750 RPM General Pump Description**

Construction: 304 or 316 stainless steel  
 Capacities: 5 – 38 gallons per minute (2.3 – 8.5 m<sup>3</sup>/hr)  
 Heads: 15 – 250 feet TDH (4.5 – 81 meters)  
 Staging: 2–16  
 Minimum flow: 5 GPM  
 Maximum working pressure: 230 PSI (16 bar) for the NPT version and 360 PSI (25) for the ANSI flange version  
 Temperatures: Standard liquid temperature from -20°F (-30°C) to 250°F (120°C)

Design options:

Type	Material		Stages	Connections	Location
	304	316			
3SVA	x		2–8	NPT	In-line
3SVB	x		2–16	ANSI flange	In-line
3SVC	x		5–13	ANSI flange	Top/bottom
3SVD		x	2–16	ANSI flange	In-line

Piping Connections: Suction and discharge openings are 1½" NPT. ANSI flanges are class 300, 2" flanges. Victaulic are 2" NPT.

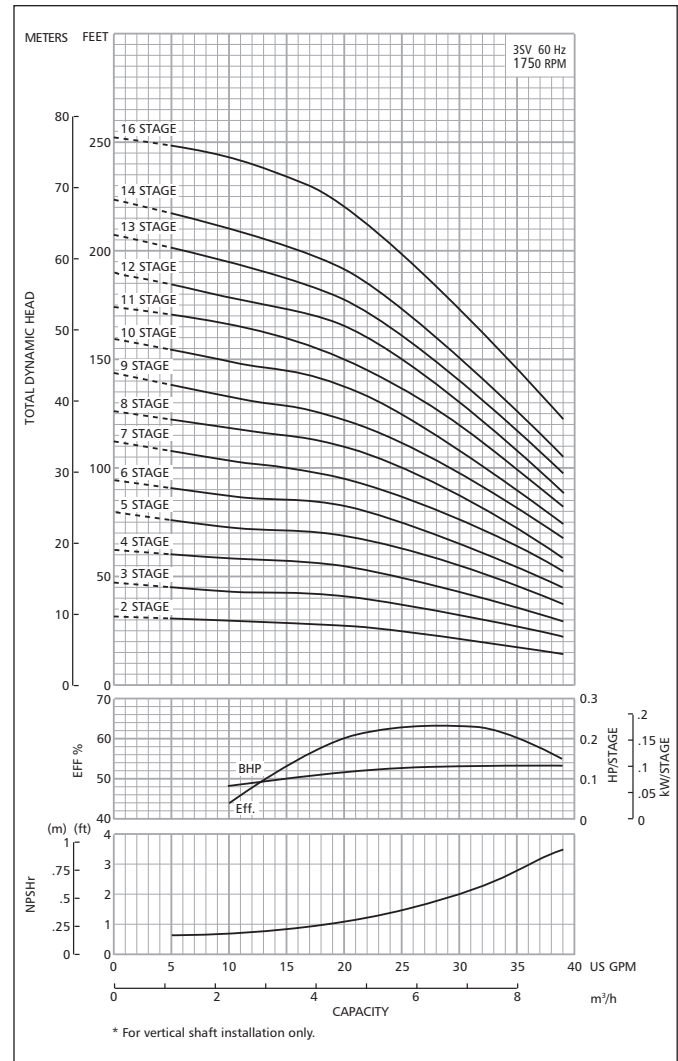
Solids handling: Although not recommended, the pump may pass a 1/8" sphere.

Component Materials	304 Version	316 Version
Pump body	304 stainless steel	316L SS
Casing O-rings	Viton	Same
Tie-rods and nuts	Zinc-coated steel	Same
Pump shaft	304 stainless steel	316L SS
Pump casing	304 stainless steel	316L SS
Top seal housing	304 stainless steel	316L SS
Inner bowls	304 stainless steel	316L SS
Diffusers	304 stainless steel	316L SS
Impellers	316L stainless steel	Same
Impeller O-rings	Viton	Same
Shaft spacers	316L stainless steel	Same
Shaft bushing	Ceramic	Same
Shaft sleeve	Tungsten carbide	Same
Seal spring and retainer clip	316L stainless steel	Same

Mechanical seal

Code No.	Rotary	Stationary	Elastomer	Ref. Appl.
0	High Temp. Carbon	Silicon	Viton	General Service
4	Silicon Carbide Graphite Filled	Carbide Graphite		Abrasive
6	High Temp. Carbon	Filled	EPR	Boiler Feed
Priming and drain plug		316L stainless steel		Same
NEMA motor adapter		Cast iron		Same
Coupling guards		304 stainless steel		Same
Motor shaft coupling		Cast aluminum below 5 HP and cast iron 5 HP and above		Same
Pump base		Cast aluminum		Same

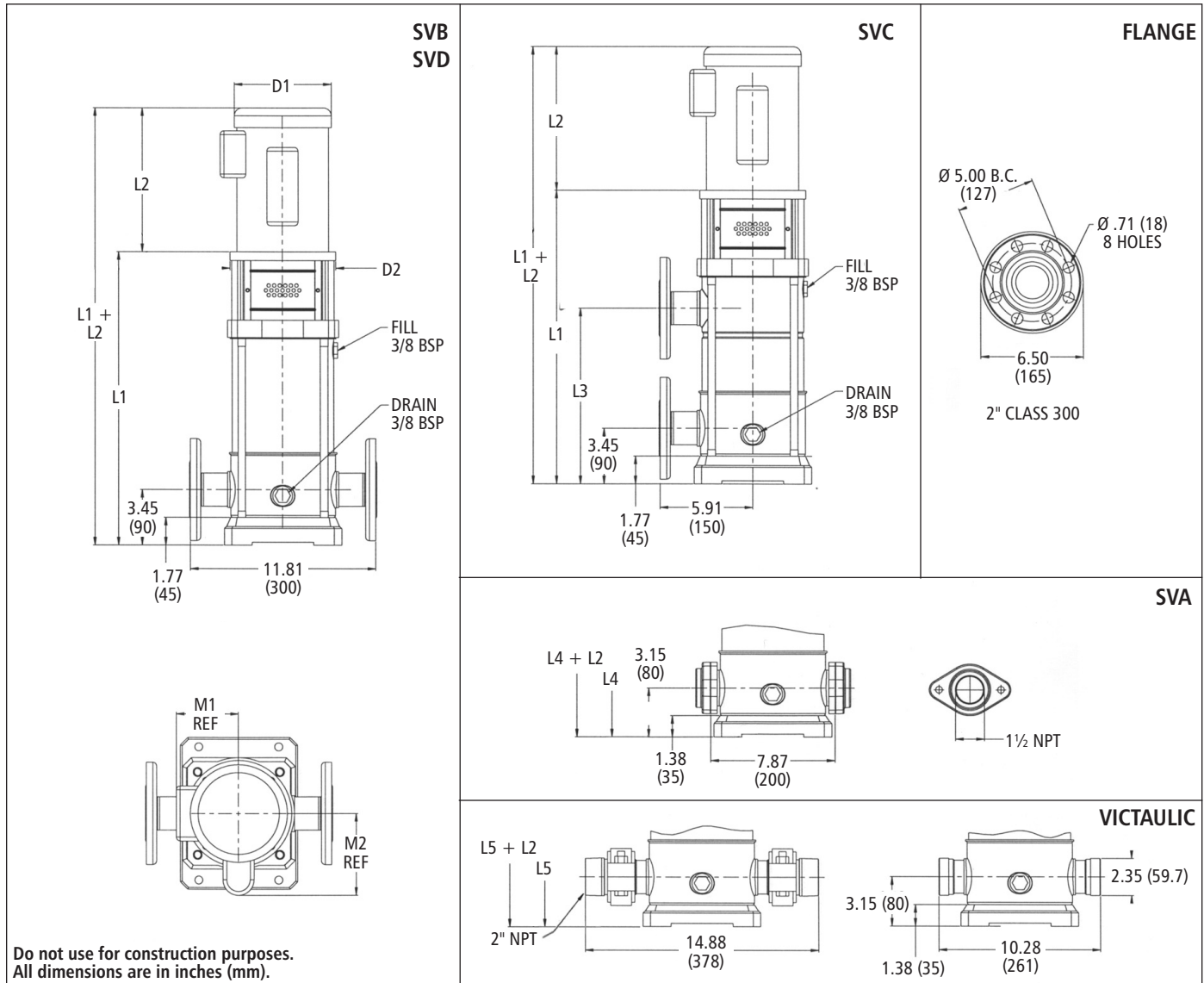
**Performance Curves**



**3SV – 1750 RPM Motors**

Standard motors supplied by Goulds are NEMA standard TC frame motors open drip proof, or totally enclosed fan cooled enclosures. 60 Hz, 1750 RPM and three phase ½ to 5 HP (208–230/460 V). 3 SV horsepowers from ½ to 5 HP. For other motor options, contact the factory. Above motors are 1.25 S.F. for ½ and ¾, 1.15 S.F. for 1 to 5 HP.

## 3SV Dimensions and Weights



Stage	Frame (1-Phase)		Frame (3-Phase)				L2					D1 (max.)		Weights (lb)								
	ODP	TEFC	ODP	TEFC	HP	L1	ODP	TEFC	L3	L4	L5	M1 (max.)	M2 (max.)	ODP	TEFC	Liquid End	ODP	TEFC				
2	Consult Factory				½	15.75	9.16	9.29	11.81	15.31	15.31	5.06	5.19	6.19		33	24	28				
3						16.81				16.81	35											
4						18.31				18.31	37											
5					¾	19.81	10.79	9.91	12.69	19.81	19.81	5.75	5.56			7.19	40	32	40			
6						22.81			15.69	22.81	22.81						44					
7					1	24.25	10.66	11.19	17.19	24.25	24.25	5.75	5.56			7.19	45	40	43			
8						25.38			20.19	25.38	38.44						45					
9					1½	28.38	11.19	12.06	21.69	28.38	29.94	5.75	5.56			7.19	53	43	51			
10						29.88			24.63	30.64	32.94						62					
11						32.88			34.03	37.44	7.19						7.19			64	51	56
12						35.88														65		
13																	68					
14																	72					
16																						