A large, complex offshore oil and gas platform is shown against a clear blue sky. The structure is multi-tiered, with numerous yellow-painted steel beams, walkways, and ladders. A large crane is visible on the right side of the platform. The platform is supported by several thick, cylindrical legs extending into the dark blue ocean. The overall scene conveys a sense of industrial scale and engineering complexity.

HIGHLY ENGINEERED PUMP SOLUTIONS FOR THE ENERGY INDUSTRY

spp
PUMPS

PROTECTING LIFE. IMPROVING LIVES.

OVER 145 YEARS EXPERIENCE

SPP Pumps has led the design and manufacture of centrifugal pumps and engineered pumping solutions for nearly 150 years.

1875 - 1878

A British Engineer bought the patent rights of the Pulsometer Pump from an American, Thomas Hall in 1875. "The Pulsometer Engineering Company Ltd" was founded in 1878.

From this came the birth of the Company as it is known today.

1901

The Company moved from London to new premises in Reading, UK and expanded rapidly.

1961

Pulsometer Engineering joined Sigmund Pumps of Gateshead making one of the largest pump companies in Europe, known as Sigmund Pulsometer Pumps, SPP for short.

1986

SPP Pumps acquired Henry Sykes plc adding the famous 'Sykes' pumps to its range. The Sykes facility was completely redeveloped and in 1987 all manufacturing was moved to Coleford, in the West of England, where it is today.

1989

After a brief period of ownership by the Braithewaite Group, SPP Pumps was acquired by the TBG group in 1989 as part of Sterling Fluid Systems.

2003 - PRESENT

SPP Pumps was acquired by Kirloskar Brothers Ltd, in 2003. SPP Pumps launched the hydraulic driven fire water pump, to extend the product portfolio of well proven vertical lineshaft and submersible fire pumps, thus offering all configurations and drive options.

The Pulsometer Steam Pump.

WILL PUMP ALMOST ANYTHING.

NO OIL, TALLOW, OR PACKING.

NOISELESS.

MANY THOUSANDS

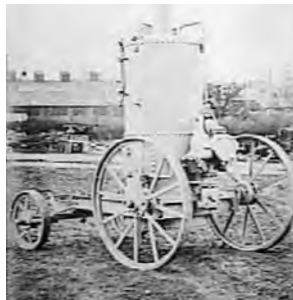
NO SKILLED ATTENDANCE REQUIRED.

WILL WORK SUSPENDED ON A CHAIN

NO EXHAUST.

IN USE.

UNBREAKABLE		REDUCED PRICE LIST	
Size of Pipe	Price	Size of Pipe	Price
1 1/2	10	12	100
2	15	14	150
3	25	16	200
4	40	18	300
6	75	20	400
8	120	24	600
10	180	30	900
12	250	36	1200
14	350	42	1600
16	450	48	2000
18	600	54	2500
20	750	60	3000
24	1100	72	4000
30	1600	84	5000
36	2200	96	6000
42	2800	108	7000
48	3500	120	8000
54	4200	132	9000
60	5000	144	10000
66	5800	156	11000
72	6500	168	12000
78	7200	180	13000
84	8000	192	14000
90	8800	204	15000
96	9500	216	16000
102	10200	228	17000
108	11000	240	18000
114	11800	252	19000
120	12500	264	20000
126	13500	276	21000
132	14500	288	22000
138	15500	300	23000
144	16500	312	24000
150	17500	324	25000
156	18500	336	26000
162	19500	348	27000
168	20500	360	28000
174	21500	372	29000
180	22500	384	30000
186	23500	396	31000
192	24500	408	32000
198	25500	420	33000
204	26500	432	34000
210	27500	444	35000
216	28500	456	36000
222	29500	468	37000
228	30500	480	38000
234	31500	492	39000
240	32500	504	40000
246	33500	516	41000
252	34500	528	42000
258	35500	540	43000
264	36500	552	44000
270	37500	564	45000
276	38500	576	46000
282	39500	588	47000
288	40500	600	48000
294	41500	612	49000
300	42500	624	50000
306	43500	636	51000
312	44500	648	52000
318	45500	660	53000
324	46500	672	54000
330	47500	684	55000
336	48500	696	56000
342	49500	708	57000
348	50500	720	58000
354	51500	732	59000
360	52500	744	60000
366	53500	756	61000
372	54500	768	62000
378	55500	780	63000
384	56500	792	64000
390	57500	804	65000
396	58500	816	66000
402	59500	828	67000
408	60500	840	68000
414	61500	852	69000
420	62500	864	70000
426	63500	876	71000
432	64500	888	72000
438	65500	900	73000
444	66500	912	74000
450	67500	924	75000
456	68500	936	76000
462	69500	948	77000
468	70500	960	78000
474	71500	972	79000
480	72500	984	80000
486	73500	996	81000
492	74500	1008	82000
498	75500	1020	83000
504	76500	1032	84000
510	77500	1044	85000
516	78500	1056	86000
522	79500	1068	87000
528	80500	1080	88000
534	81500	1092	89000
540	82500	1104	90000
546	83500	1116	91000
552	84500	1128	92000
558	85500	1140	93000
564	86500	1152	94000
570	87500	1164	95000
576	88500	1176	96000
582	89500	1188	97000
588	90500	1200	98000
594	91500	1212	99000
600	92500	1224	100000



SPP continues to evolve...

KNOWLEDGE & EXPERTISE YOU CAN TRUST



SPP PUMPS OFFER PUMPING SOLUTIONS FOR THE ENTIRE ENERGY MARKET: RENEWABLES, CARBON CAPTURE AND HYDROGEN PRODUCTION AS WELL AS THE TRADITIONAL HYDROCARBON SECTOR.

TRUSTED, MISSION-CRITICAL PERFORMANCE ON AND OFFSHORE

SPP Pumps Ltd brought the UK's first ever North Sea Oil from the Argyll platform to our shores in the 1970's. Today, SPP Pumps' specialist design and engineering provides maximum uptime and performance across the world.

With over 2,000 Pump packages supplied globally into the Energy market, SPP Pumps expertise always delivers more...

EXCEPTIONAL PERFORMANCE: THE OPTIMUM PACKAGE FOR ANY APPLICATION

SPP Pumps' capability extends far beyond the design and manufacture of best-in-class pumps. The company packages pump units into complete solutions. The result is finely tuned, bespoke-engineered units that precisely meet the performance specification each application requires.

STREAMLINED PROJECT MANAGEMENT.

Lost oil or gas production, even in a small facility, can cost an operation millions of pounds per day. Rigorous project management – and in particular, close collaboration and communication with customers – ensures SPP Pumps' solutions are optimally matched to the performance needs.



EXCEPTIONAL RELIABILITY: PROVEN AND TESTING INTEGRITY – QUALITY ASSURED.

Lives, property and livelihoods depend on a pump's performance. In Oil and Gas applications, premature failure is simply not an option. Backed by one of the most extensive specialist testing facilities in the UK, every SPP Pumps manufacturing site is ISO 9001:2015 approved, with PD ISO/TS 29001:2011 approved for the Oil & Gas sector. ISO14001:2015 (environmental), OHSAS 18001:2007 (H&S), Achilles and First Point Assessment verification. All pump packages, including fire pumps, comply with the latest industry regulations.

CASE STUDY - PETRECO FIREFIGHTING

SYSTEM PHASE 2

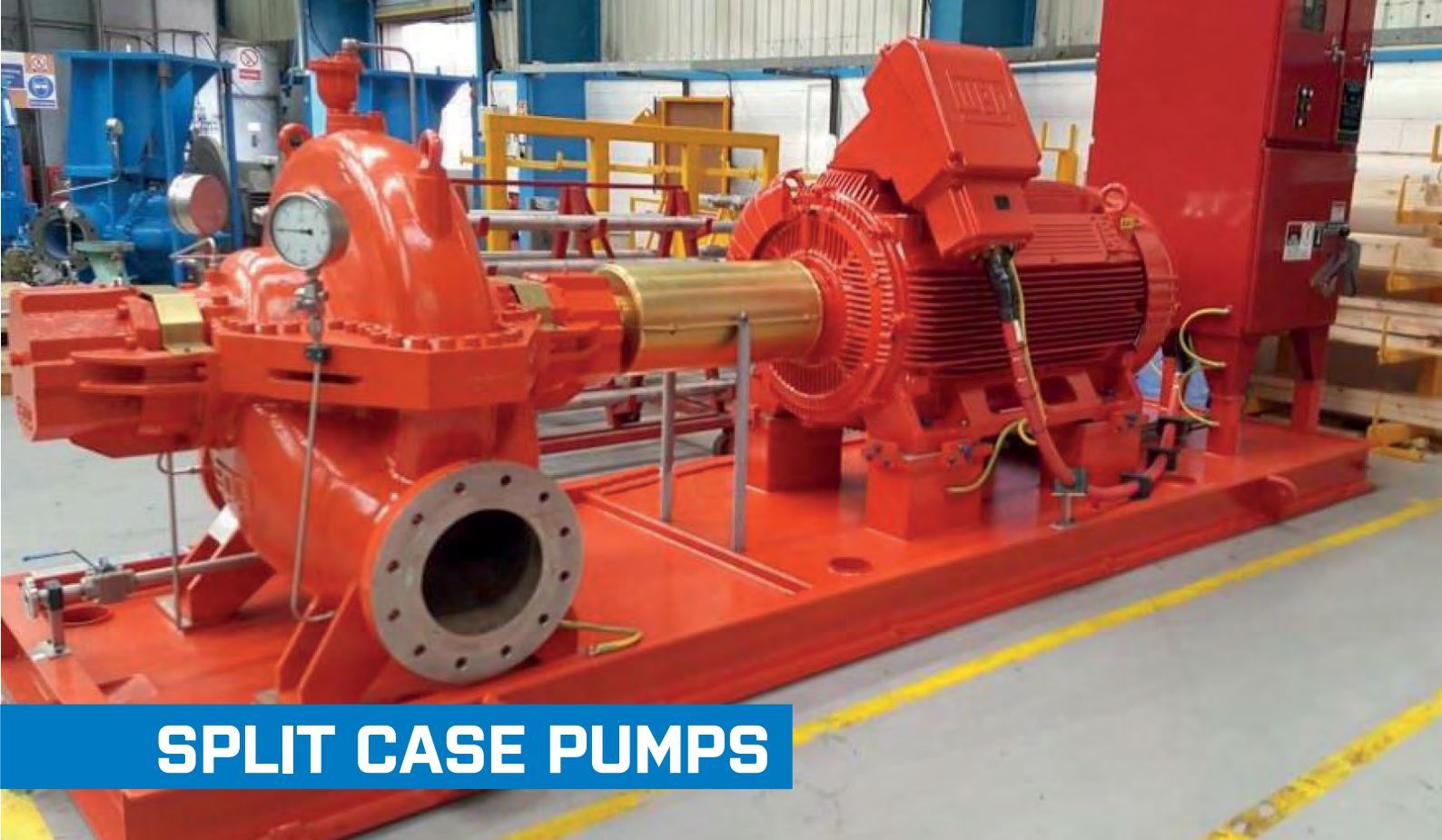
Overview

The Petreco Oil Centre located on the Gulf of Suez in Egypt has a 260,000 barrels/day treatment capacity and gathers some 85,000 barrels/day of oil from onshore and offshore fields, all operated by Petrobel. Petreco is connected to the Feiran tank farm and marine terminal, with a storage capacity of 2 million barrels.

Location: Onshore Egypt

Equipment: 3 x BR12D horizontal split case fire water pumps, powered by diesel engines.





SPLIT CASE PUMPS

SPECIFICALLY ENGINEERED FOR THE OIL, GAS AND PROCESS INDUSTRIES, THESE ROBUST PRODUCTS OFFER PROVEN LONG TERM RELIABILITY, ESPECIALLY IN ARDUOUS OPERATIONAL AND ENVIRONMENTAL CONDITIONS.

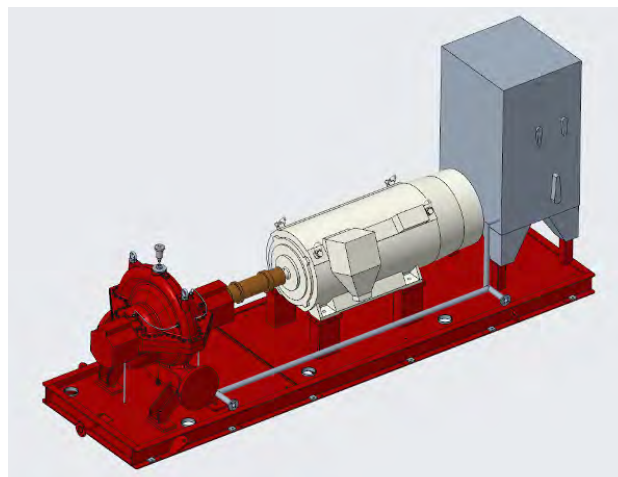
- Low NPSH* capability, high efficiency
- Balanced axial loads – maximum bearing life
- Removable top casing for easy maintenance
- Lowest life cycle cost through industry leading efficiency and rugged mechanical design

OPTIONS AND DESIGN CONFIGURATIONS

- Various construction materials to meet project requirements
- Custom engineering options
- Horizontal, vertical, direct coupled or vertical open shaft configuration
- Hydraulic drive
- Clockwise or counter clockwise rotation
- European or US flange drillings

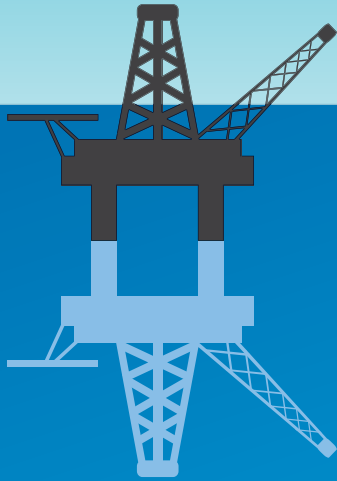
APPLICATIONS

- Main fire pump
- Firewater jockey pump
- Booster pump
- Seawater intake
- Seawater lift
- Cooling water
- Utilities



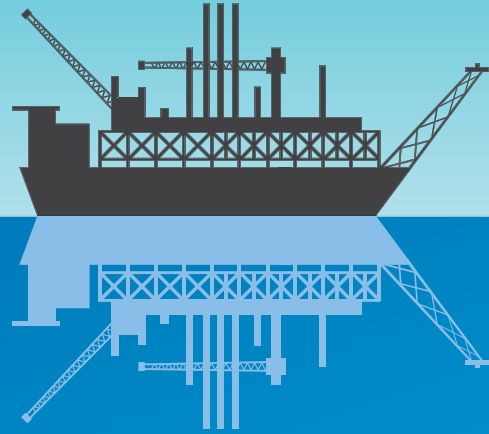
WHERE CAN SPP PUMPS' PROVEN TECHNOLOGIES SUPPORT YOUR OPERATIONS?

TYPICAL PUMPING SOLUTIONS - OIL



1

- Fire water
- Sea water lift
- Water injection
- Oil Export
- API Process
- Non API
- Utilities
- Ballast/De-Ballast



2

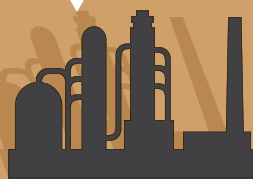
- Fire water
- Sea water lift
- Water injection
- Oil Export
- API Process
- Non API
- Utilities
- Ballast/De-Ballast

3

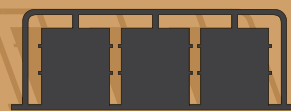
TRANSPORTATIONS

PETROCHEMICAL

- Fire water
- Sea water intake
- Cooling Water
- API Process
- ANSI and ISO Chemical
- Utilities
- Pipeline/Booster



REFINERY

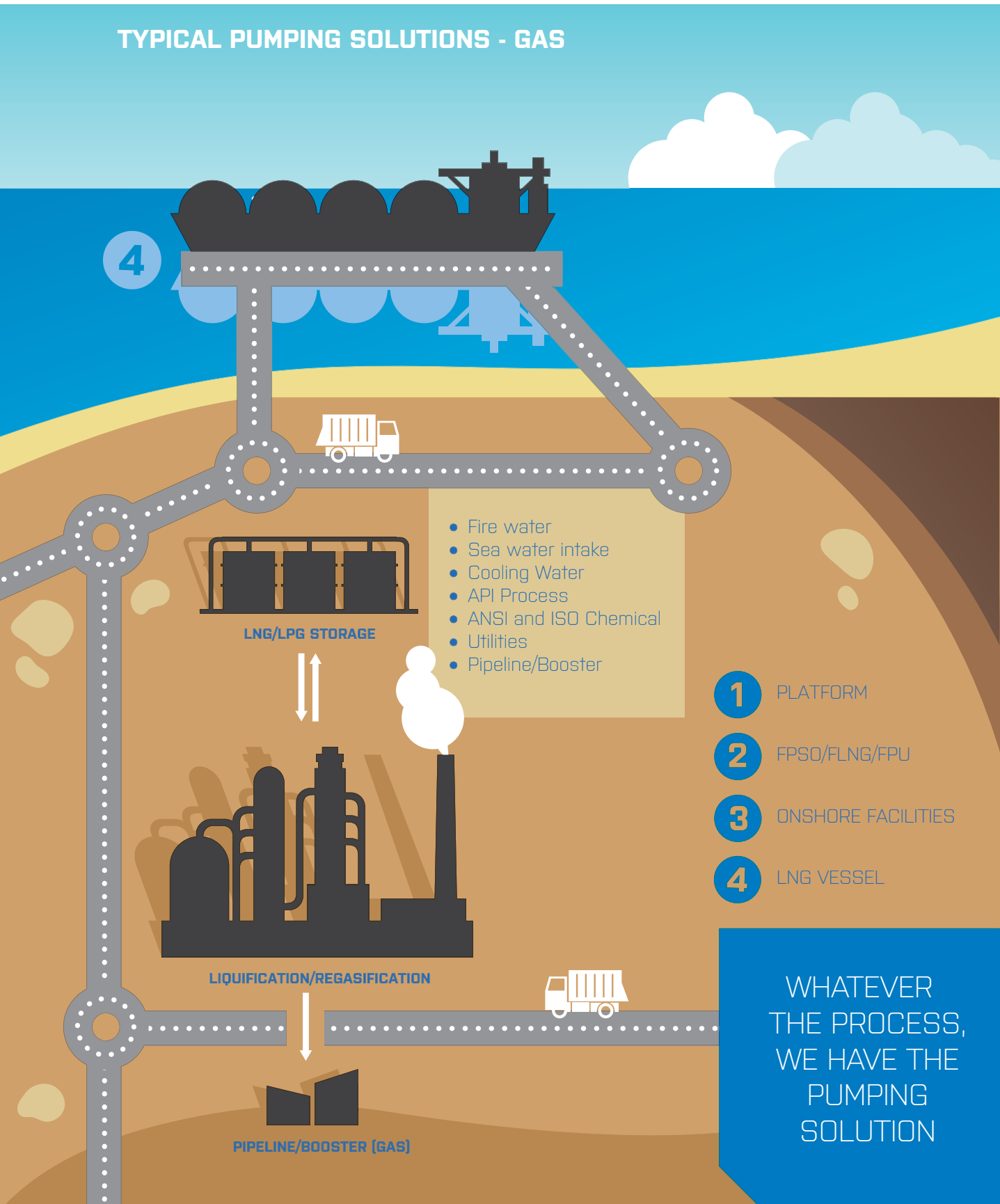


TANK FARM

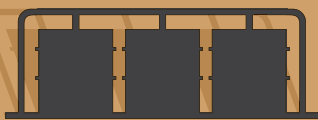


PIPELINE/BOOSTER (OIL)

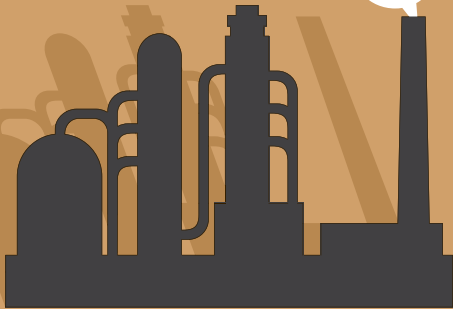
TYPICAL PUMPING SOLUTIONS - GAS



4



LNG/LPG STORAGE



LIQUIFICATION/REGASIFICATION



PIPELINE/BOOSTER (GAS)

- Fire water
- Sea water intake
- Cooling Water
- API Process
- ANSI and ISO Chemical
- Utilities
- Pipeline/Booster

- 1** PLATFORM
- 2** FPSO/FLNG/FPU
- 3** ONSHORE FACILITIES
- 4** LNG VESSEL

WHATEVER THE PROCESS, WE HAVE THE PUMPING SOLUTION

CASE STUDY - AZERI PLATFORM

Overview

The Azeri Central East (ACE) project is a new Production, Drilling, Quarters (PDQ) fixed platform located in the existing Azeri-Chirag-Gunashli (ACG) field within Azerbaijan's territorial waters of the Caspian Sea.

Location: Offshore Baku Azerbaijan

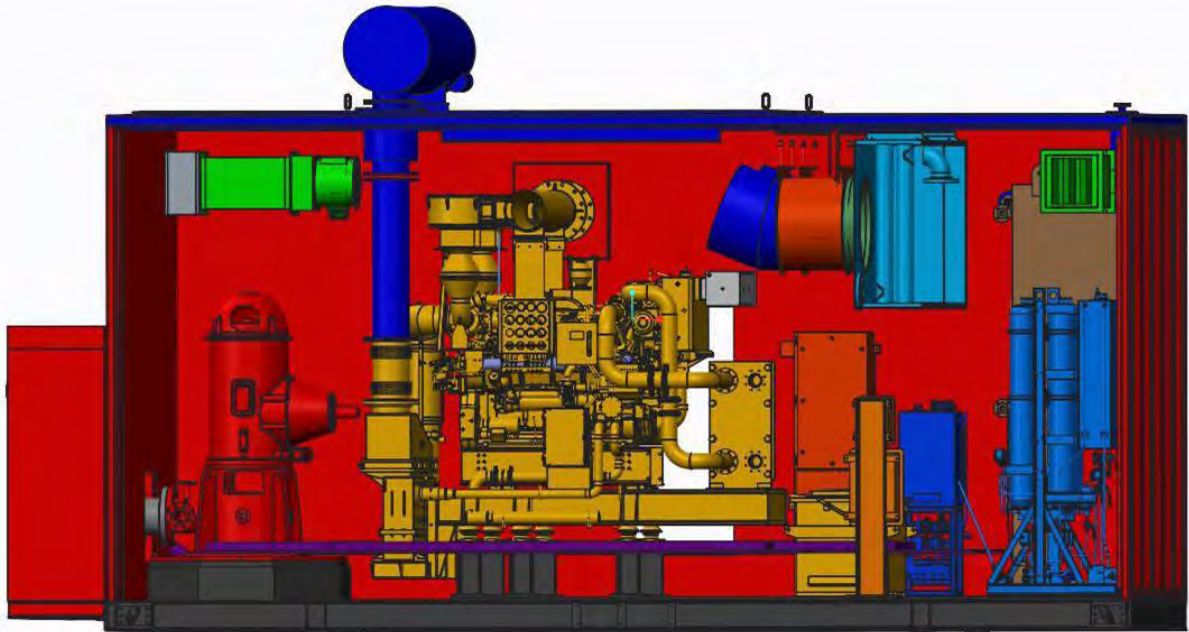
Equipment: GL16F1Y two stage. vertical turbine pump, driven by 1505kW diesel engine.

Gear Drive – Right angle type

Controller - Microprocessor type



VERTICAL LINESHAFT PUMPS



CUSTOM ENGINEERED SINGLE OR MULTI-STAGE VERTICAL TURBINES. DRIVEN BY SURFACE MOUNTED ELECTRIC OR DIESEL DRIVERS, THEY CAN BE SUPPLIED UP TO 100 METRES IN OVERALL LENGTH.

- Exceptional range of choice
- Designed for fresh or sea water applications

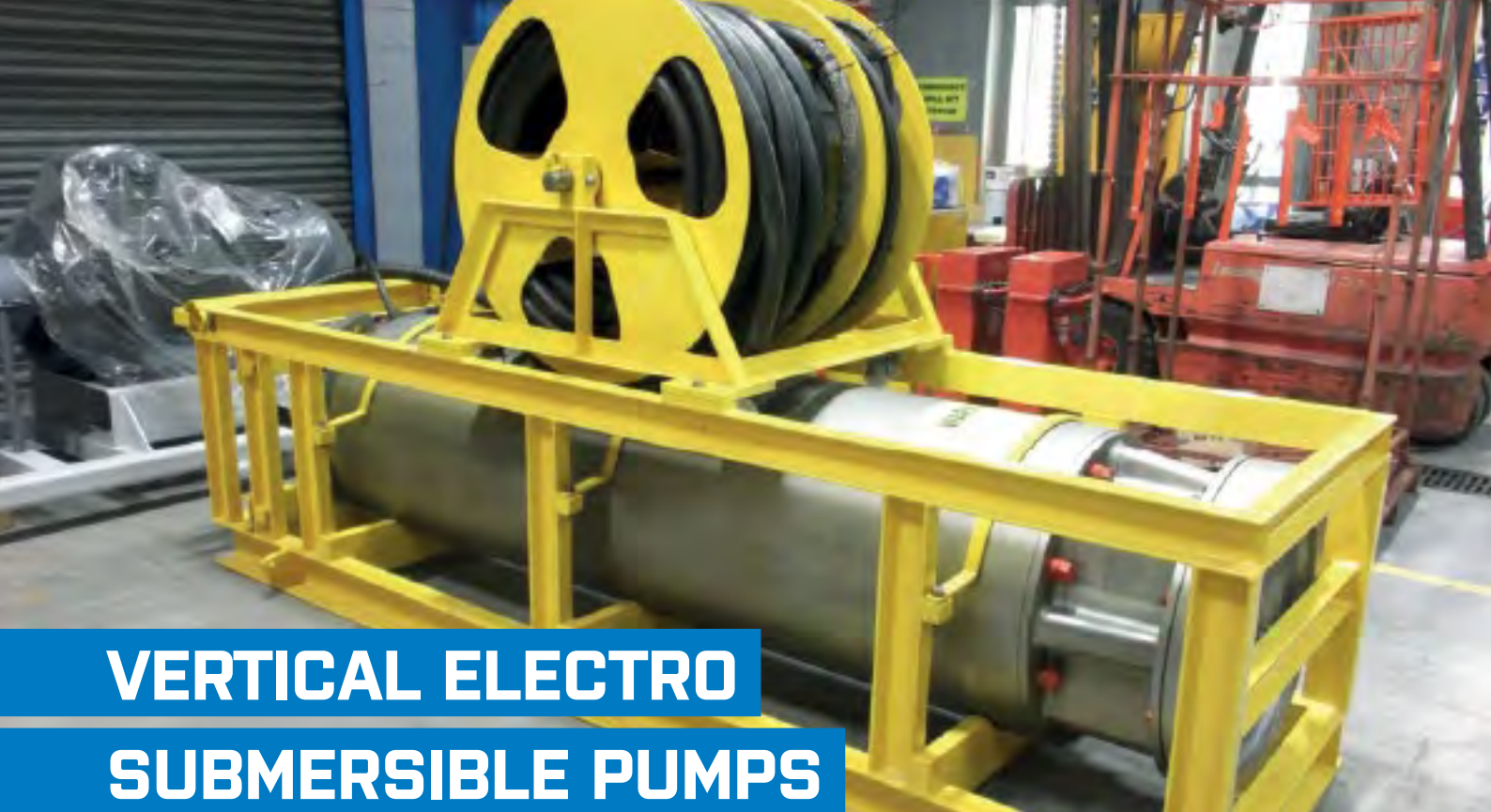
OPTIONS AND DESIGN CONFIGURATIONS

- Flexible/stiff shaft
- Tilting pad or anti friction driver/gearbox mounted thrust bearings
- Special suction impellers
- Cast or fabricated column pipes
- API 610 construction
- Marine anti fouling systems
- Below deck discharge (for platform or jetty)
- Sacrificial anodes
- Hydraulic drive

APPLICATIONS

- Main fire pump
- Firewater jockey pump
- Cargo handling
- Seawater intake
- Seawater lift
- Cooling water
- Utilities





VERTICAL ELECTRO SUBMERSIBLE PUMPS

VERTICAL TURBINE DESIGN WITH EITHER SINGLE OR MULTI-STAGE CONFIGURATION. DRIVEN BY SUBMERSIBLE (IP68) MOTORS AS AN ALTERNATIVE TO DECK MOUNTED DRIVE UNITS. IDEAL FOR OFFSHORE INSTALLATION WHERE SPACE PRECLUDES CONVENTIONAL PLATFORM MOUNTED LINESHAFT PUMPS.

- Up to 100 meters in overall length
- Pump and motor are located below sea level in a caisson
- Diesel generator is placed on the platform

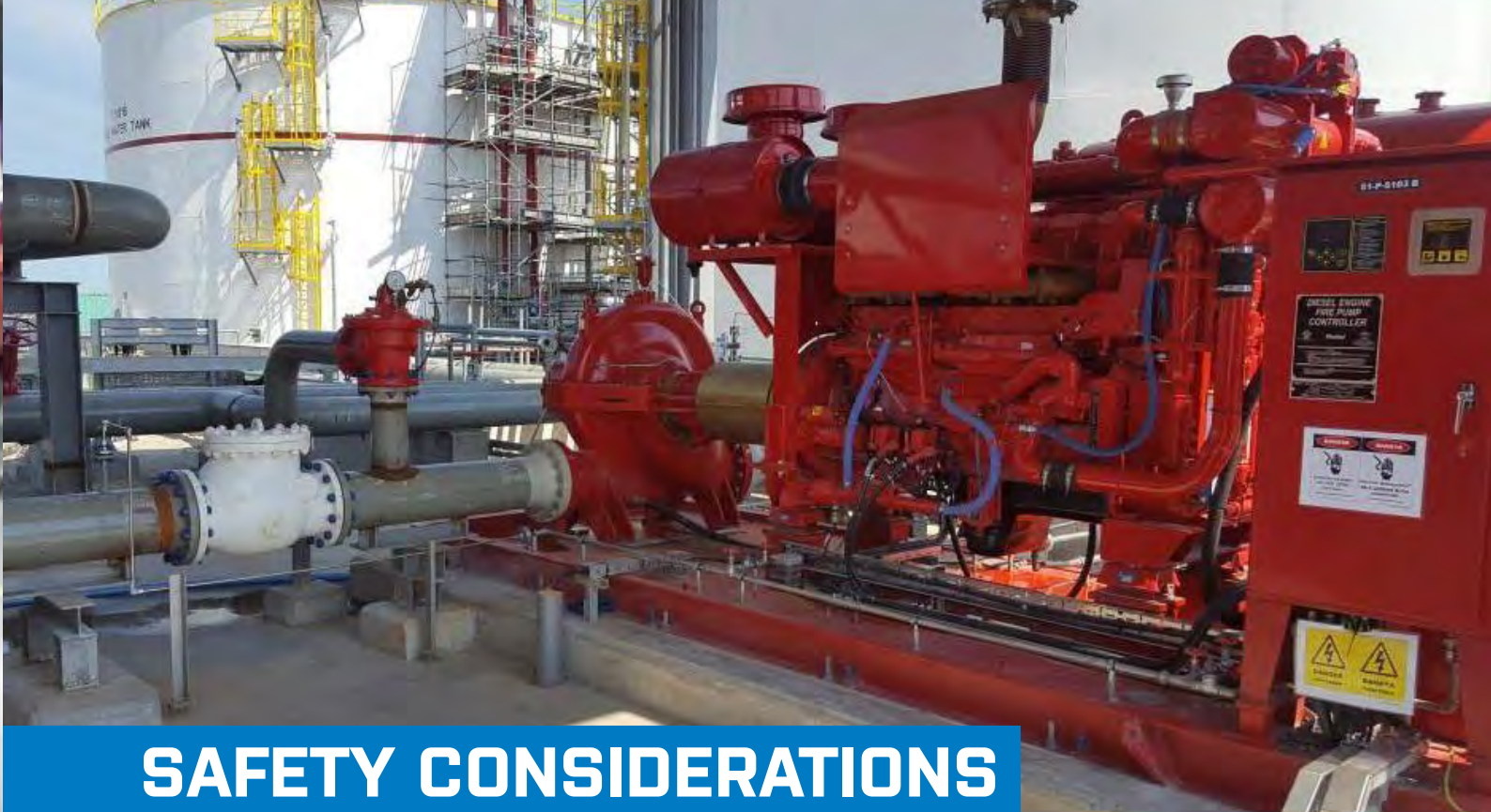
OPTIONS AND DESIGN CONFIGURATIONS

- Driven by existing platform supplies or dedicated diesel generator drives
- Motor mounting above or below pump hydraulic
- Fully packaged generator sets also available
- Cast or fabricated column pipes
- API 610 construction
- Marine anti-fouling systems
- Sacrificial anodes

APPLICATIONS

- Main fire pump
- Firewater jockey pump
- Booster pump
- Seawater intake
- Seawater lift
- Cooling water
- Utilities



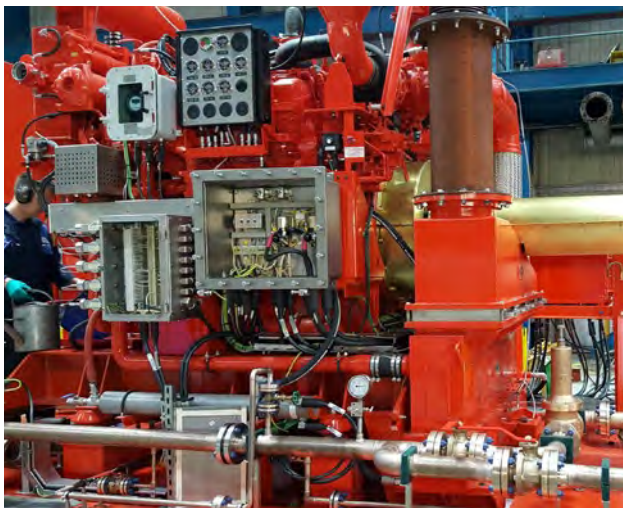


SAFETY CONSIDERATIONS

SPP can provide pump packages whatever the safety considerations may be:-

HAZARDOUS AREA PROTECTION

If the pump packages are required to operate in an environment where hazardous gases may be present, SPP are able to supply equipment to meet the designated area classification (ATEX, NEC 500/505, IEC/CENELEC)



NOISE PROTECTION

Where ambient noise levels are of concern, SPP can supply acoustic enclosures to reduce equipment noise to acceptable levels.

Enclosures can be designed to cover all or part of a package dependent upon the specific requirements of the installation/site.

FIRE PROTECTION

Enclosures and complete modules can also be supplied A0 or A60 fire rated and H60 or H120 hydrocarbon fire rated. They can also be supplied with fire detection and suppression systems.





OUR ENGINEERING SERVICES CAPABILITIES

A LIFETIME OF SUPPORT AFTER INSTALLATION

SPP Pumps Engineering Services teams offer full product support from installation, commissioning, factory or on-site training to planned and unplanned maintenance or complete through life service contracts. SPP have strategically located facilities and support teams globally, along with agent networks to ensure a rapid response to our clients. Our specialist Engineers are qualified to offshore standards to meet all the expectations of this industry supporting installation, commissioning, removal and Root Cause Analysis fault finding of the complete pump package, inclusive of pumps, engines, gearboxes & control panels.

In addition, SPP offer complete Engineered upgrade services to increase reliability and mean time between failure from hydraulic performance optimization re-rating or de-rating, material upgrades, complete overhaul or replacement of all pump products and associated equipment. We welcome the opportunity to discuss your specific requirements.



www.sppumps.com | energy@sppumps.com | tel: +44 (0) 118 932 3123



SPP Pumps Ltd reserve the right to continually develop and improve products. Information contained herein is for guidance only and subject to change. SPP Pumps Ltd accept no liability whatsoever for any damages either direct or consequential resulting from the use of such information.

To download or view SPP Pumps certification please see our website sppumps.com

PROTECTING LIFE. IMPROVING LIVES.